



Thank you for considering Greenfields Childcare Centre for your child. We are in the privileged position of sharing the care of children of all ages with their parents and always strive to provide them with a loving and caring home away from home. We hope this leaflet will provide you with useful information, but feel free to contact me with any queries or for an application form.

**Lisa O'Neill**  
**Manager**



**Lisnamult Residents Association Ltd.**

*Our Thanks to the following organizations for their support and funding:*



Greenfields Childcare  
Lisnamult Community Centre  
Lisnamult  
Roscommon

**Greenfields  
Childcare**



**2018**

**Telephone**  
Office: 090 6626152  
Floor: 090 6628799

**E-mail:**  
[greenfieldsenterprise@eircom.net](mailto:greenfieldsenterprise@eircom.net)

**[Greenfieldschildcare.com](http://Greenfieldschildcare.com)**

## Opening Hours

Monday to Friday, 9:00am - 6:00pm

8:00–9:00, Breakfast Club  
9:00 - 12:15, Morning Session  
9:00–1:00, (no dinner)  
9:00–1:30, (with dinner)  
2:30–5:30, Afternoon Session  
9:00 - 6:00, Full Day

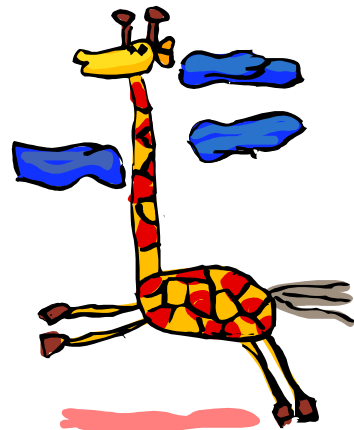
## Sessions Available

We provide part time, sessional and full time day care for children from 3 months to 5 years including Creche, Toddler and Pre-School. Additionally, we operate an Afterschool service for primary school children of all ages and a Breakfast club in the morning.



## Facilities

- The Centre is notified to TUSLA and open to inspection on an annual basis with follow-up visits thereafter.
- Highly trained staff
- Wheelchair Access
- CCTV in all rooms
- 2 All-weather playgrounds
- Indoor and outdoor play area
- Children's common room
- Parking
- Art Equipment
- Educational Toys
- Computers
- Fully Equipped Kitchen
- Nutritionally Balanced, Healthy meals provided for Full Day and After-school Club



## Fees

This Service is a non-profit organisation which is part funded by Pobal. In general, fees are set at the beginning of each school year based on our running costs and the sustainability of the service.

**The fees per week are as follows:**  
(Creche, Toddler, Pre-school and Breakfast Club)

€150 full time - over 5 hours per day  
€80 part time - less than 5 hours per day  
€90 part time - until 1:30, includes dinner  
€65 sessional - less than 3.5 hours per day  
€3 per day for Breakfast Club



## Subvention Scheme

If you are in receipt of a Social welfare Payment /benefit eg a Medical Card, you may be eligible for a discount off our fees under the Subvention Scheme. We submit completed forms to the Office for the Minister for Children and we are then notified of the level of discount, if any, to apply.

## ECCE Scheme

Children are eligible for two years free pre-school once they reach 2 years and 8 months by September. The scheme allows for 3 free hours per day, 5 days a week for 38 weeks in the school year. Children can attend more than 3 hours per day, subject to availability, which will be charged at our normal rates.

**Greenfields Childcare is run with the support of POBAL funding and is a "not for profit" organisation.**

## Aims & Objectives:

- Quality Service
- Highest standards in Health & Safety
- Promotion of physical, intellectual, linguistic, emotional, creative and social skills.
- Freedom of expression and self discipline
- Individuality respected and nurtured
- Appreciation and value for differences and similarities
- Openness and inclusivity
- Parents are most significant adults in the child's life and we strive to create mutual respect between them and staff for the benefit of the child.

## Mission Statement:

We provide a planned programme of care and pre-school education in a child centred play-based environment, which will empower young children to actively pursue their own learning and develop their own understanding and knowledge in life.



## History of Greenfields

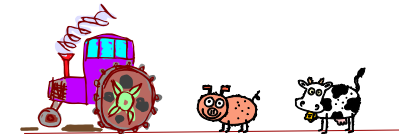
Lisnamult Residents Association Ltd was established in 1973 to promote and develop the local community. They have undertaken a number of successful projects such as the building of a Community Centre, youth and sport activities, developing play grounds, establishing the Childcare Centre which opened in 2002 and most recently the Astro Turf Pitch.

## Holidays:

- All Bank Holidays,
- 1 weeks in August
- 1.5 weeks at Christmas (approximately)
- 3 days at Easter.

Exact dates will be notified in September of each year.

**FEES ARE PAYABLE FOR 50 WEEKS PER YEAR. There is one free week at Christmas and one free week in August.**



## Policies & Procedures

A full copy of all our policies and Procedures is available on request. Please speak to the Manager.

## Additional Information

Please visit our website for further information, call into the office or phone us.

[Greenfieldschildcare.com](http://Greenfieldschildcare.com)